

N/F  
**CONNELL C. STAFFORD JR**  
 DB 16497, PG 88

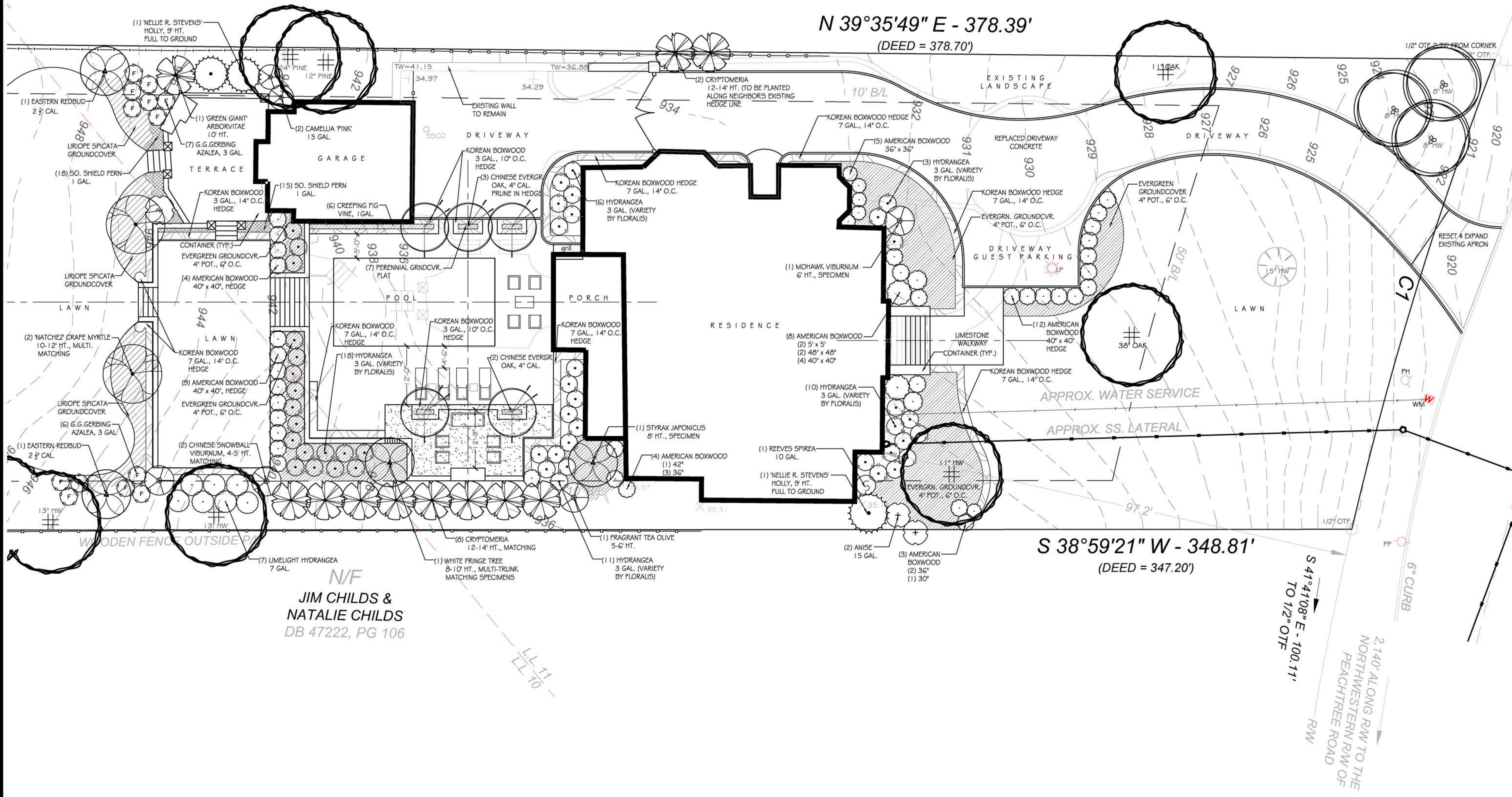
**0.8176 ACRES**

35,614 S.F.  
 DB 45917, PG 248  
 TP# 17 00110003015

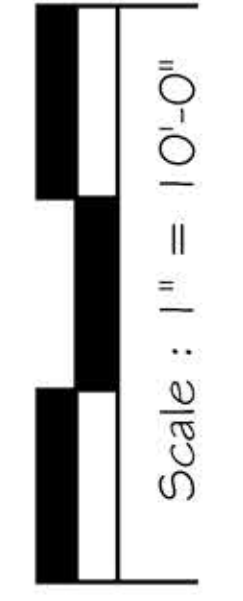
**N 39°35'49" E - 378.39'**  
 (DEED = 378.70')

**S 38°59'21" W - 348.81'**  
 (DEED = 347.20')

N/F  
**JIM CHILDS & NATALIE CHILDS**  
 DB 47222, PG 106



Progress Prints  
 NOT Released for Construction  
 Released for Construction



THE SINGER RESIDENCE  
 3914 Club Drive  
 Atlanta, Georgia 30319

LANDSCAPE PLAN

Sheet : F1.3

Date: 06.8.2015



Georgia Soil and Water Conservation Commission  
 GSWCC Level II Certified Design Professional